



PROJECT SHEET

N-Sea is an integrated total subsea solutions provider in Survey, IRM & Construction, Subsea Cable Repair & Installation, and UXO ID & Disposal.

We deliver total solutions for subsea infrastructures and assets that meet the needs of our clients and the international oil & gas, and renewable industries, considering a safe environment.

We want to create a sustainable business and increase our profitability through solid project management and full client awareness.

To realise this ambition we develop our organisation to the level of best in class being fully synchronised with our ambition and strategy by contributing to the following key success factors constantly:

- Qualified and engaged people
- Long term client relationships
- Strategic partnerships
- Innovative solutions
- Safety and quality 100%
- Visible presence
- Full control over marine assets

Safety, Health, Environment, Quality (SHEQ)

Our SHEQ Policy aims to ensure alignment to the N-Sea mission, vision and strategy, where 'first time right' means ensuring that harm is not inflicted upon its employees, contractors, service providers, or the environment, N-Sea's assets, as well as members of the public affected by its operations, infrastructure and all operational activities within our scope of work.

N-Sea management and all employees are committed to create a physical, social and psychological safe working environment. We ensure the well-being and protection

of human life, environmental duty of care, protection of assets and customer satisfaction.

N-Sea has integrated safety, security, health, environment and quality requirements into all our activities so that decisions made ensure the consideration of economic development, environmental quality, and social equity to continually improve performance and achieve stakeholder requirements.

"We genuinely care. We avoid harm to people and the environment while providing quality services to our customers."

To achieve our mission statement, we have established 4 core values that guides all employees in building their personal roles and developing our organisational culture.

We are driven to perform in accordance with the industry best practices and meet the requirements of ISO 9001 (Quality Management), ISO 14001 (Environmental Management) and ISO 45001 (Occupational Health & Safety Management) for which we are certified.

A safe working environment is vitally important to N-Sea. The safety awareness and actions of our employees play a crucial role in ensuring occupational, social and psychological safety within our organisational culture. This is reflected by our Level 3 Safety Culture Ladder certification.

Remedial cable lowering works

Lowering of interconnector cable & depth of burial survey works

Client	Interconnector owner
Location	English Channel
Period	January 2024 – April 2024
Assets	EDT Protea
Extra	Controlled Flow Tool TRS1LD, WROV XLX49 with sub bottom imager and MBES equipment.

Project description

A periodic survey of the submarine DC interconnector cable revealed that the cable was not sufficiently buried at several sections as a result of extensive seabed mobility. It was decided that the cable had to be lowered further into the seabed to increase the depth of burial, to protect the cable against possible external impacts such as anchoring and fishing activities.

Controlled Flow was selected as the preferred method for lowering the cable.

To determine the depth of burial of the life cable 'Kraken' sub bottom imager was used in conjunction with MBES survey equipment.

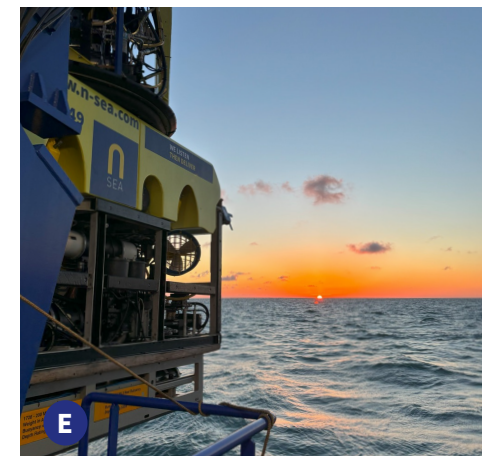
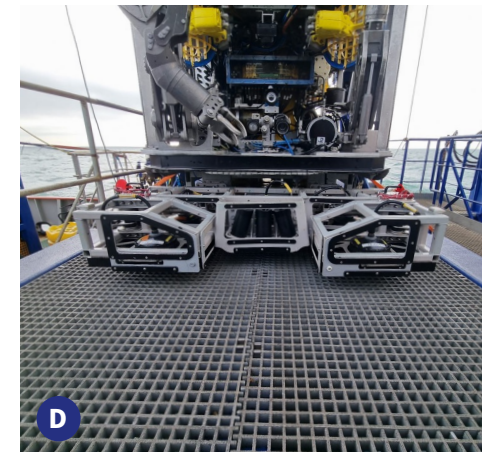
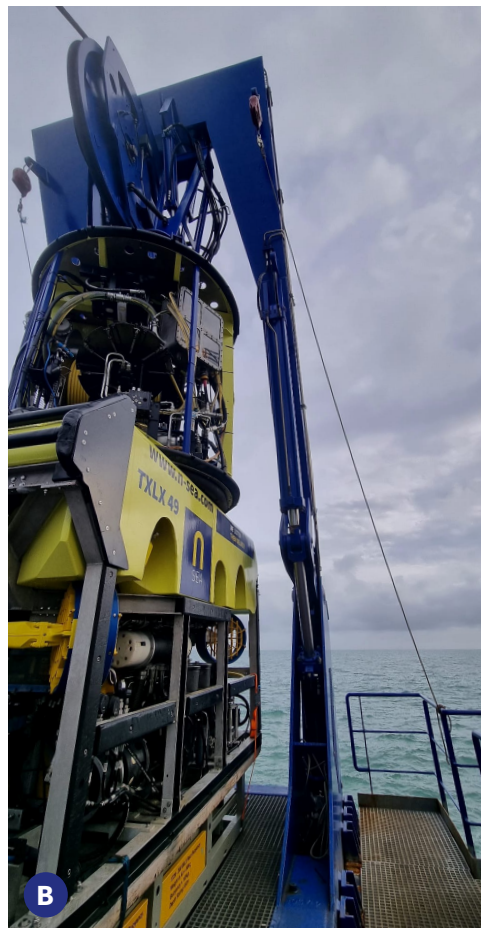
Scope of work

- Engineering and development of method statements to support the offshore operations, as well as the set-up of the vessel during the mobilisation.
- Issue notice to mariners on behalf of the client for both the UK as Dutch territorial waters and Thames Estuary and align with stakeholders within UK waters.
- Perform as-found surveys of the cable at defined sections.
- Processing survey data onboard the vessel to establish the degree of lowering required.
- Lowering of the cable into the seabed by means of Mass Flowing.
- Intermediate and as built surveys to document the performance of the lowering works.
- Onboard processing to allow client representatives to swiftly evaluate and determine whether further works were needed.

The cable remained energised throughout the operations.

Remedial cable lowering works

Lowering of interconnector cable & depth of burial survey works



A ROV XLX49 Deployment **B** ROV XLX49 on deck **C** Deployment of CFE tool **D** Sub Bottom Imager 'Kraken' tool underneath ROV **E** ROV XLX49 ready for launch

**WE LISTEN
THEN DELIVER**

N-Sea Wilgenbos 2 (4th floor), 3311 JX Dordrecht, The Netherlands **E** info@n-sea.com **E** sales@n-sea.com **T** +31 (0)111 456 000 **www.n-sea.com**