

**N-Sea is an integrated total subsea solutions provider in Survey, IRM & Construction, Subsea Cable Repair & Installation, and UXO ID & Disposal.**

We deliver total solutions for subsea infrastructures and assets that meet the needs of our clients and the international oil, gas- and renewable industries, considering a safe environment.

We have the ambition to be the go-to total subsea solutions provider. We want to create a sustainable business and increase our profitability through solid project management and full client awareness.

To realise this ambition we develop our organisation to the level of best in class being fully synchronised with our ambition and strategy by contributing to the following key success factors constantly:

- Qualified and engaged people
- Long term client relationships
- Strategic partnerships
- Innovative solutions
- Safety and quality 100%
- Visible presence
- Full control over marine assets

**N-Sea**

Wilgenbos 2 (4th floor)  
3311 JX Dordrecht  
The Netherlands

**E** info@n-sea.com  
**E** sales@n-sea.com  
**T** +31 (0)111 456 000  
**n-sea.com**

**WE LISTEN  
THEN DELIVER**

**WINTERSHALL - L6B PIPELINE REPAIR**  
REPAIR L6B PIPELINE

**PROJECT**

Wintershall Noordzee B.V. operates the 8-inch gas export pipeline from the L6-B platform to the L8-P4 platform in the Dutch part of the North Sea. The pipeline has a length of 19.2 km and produces wet gas.

In February 2022 a major power loss was observed onboard L6-B resulting in an immediate shutdown of the L6-B unmanned platform. Several investigations pointed into the direction of a damaged umbilical approximately half way the umbilical length. During an offshore campaign in August 2022 N-Sea Offshore B.V. repaired the umbilical between L6-B and L8-P4 by installing an intermediate section and two joints. After the umbilical repair it was found out that the parallel 8 inch pipeline was damaged as well.

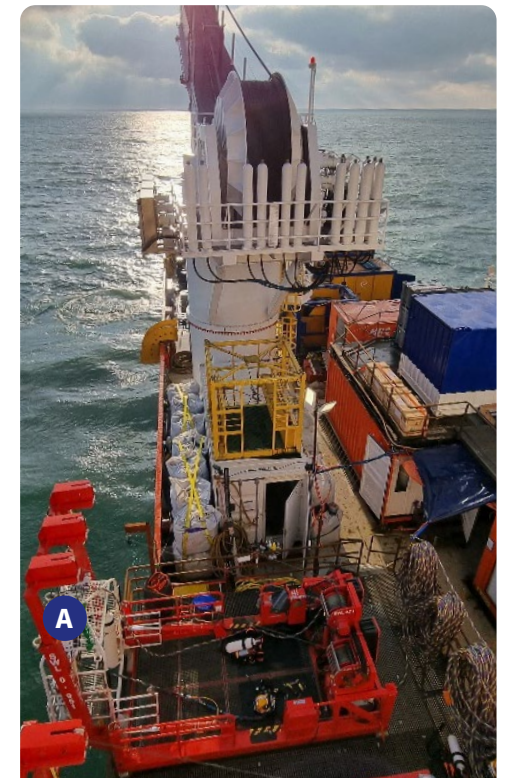
The Wintershall Noordzee B.V. awarded N-Sea Offshore B.V. to the repair and replace the damaged section of L6-B pipeline with company-provided subsea connectors and pool pieces.

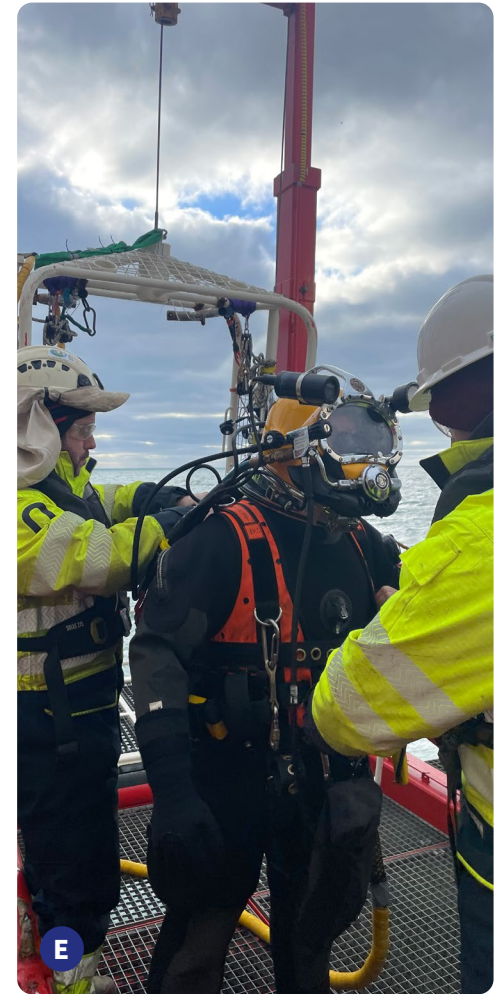
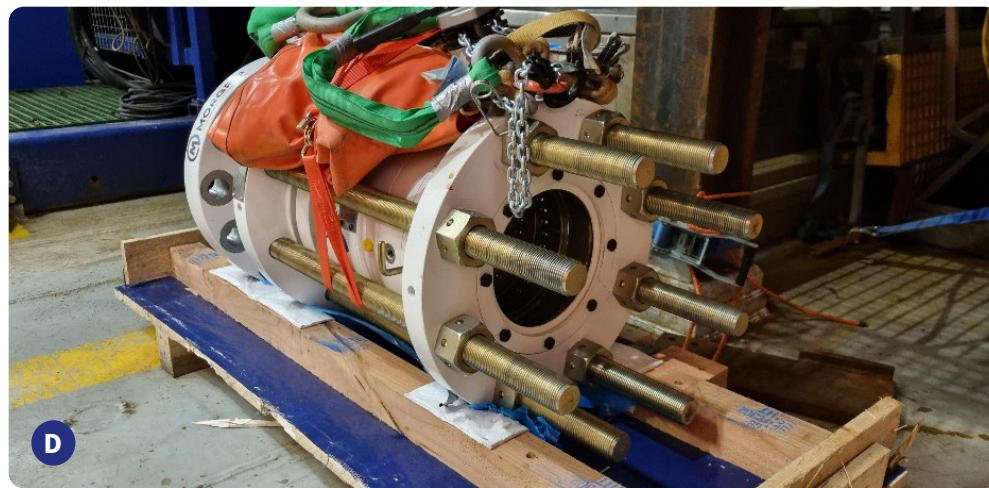
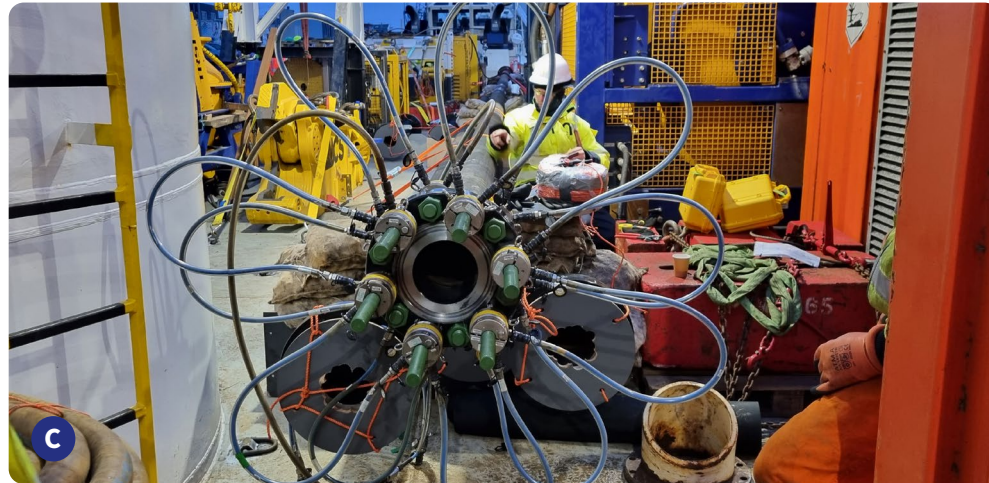
**SCOPE OF WORK**

- Fast track project preparation (3 weeks)
- Mobilisation and outfitting of DSV and equipment
- De-burry pipeline with mass flow tool excavator
- Repair and replace of approx. 50m pipeline using subsea connectors and 24m spool pieces.
- Rock dump of the repaired section
- As-built survey

**FEATURES**

<b>Client</b>	Wintershall Noordzee B.V.
<b>Location</b>	Dutch North Sea
<b>Period</b>	December 2022 - February 2023
<b>Assets</b>	EDT Protea Air Dive Spread Panther Plus ROV Mass flow excavator Several Subsea Tooling for pipeline repair
<b>Extra</b>	Water depth 40-42m





**A** Mobilised DSV EDT Protea **B** Pipeline Deburial with MFE **C** Tensioning Equipment **D** Subsea Connector Prior to installation **E** Diver on board DSV EDT Protea